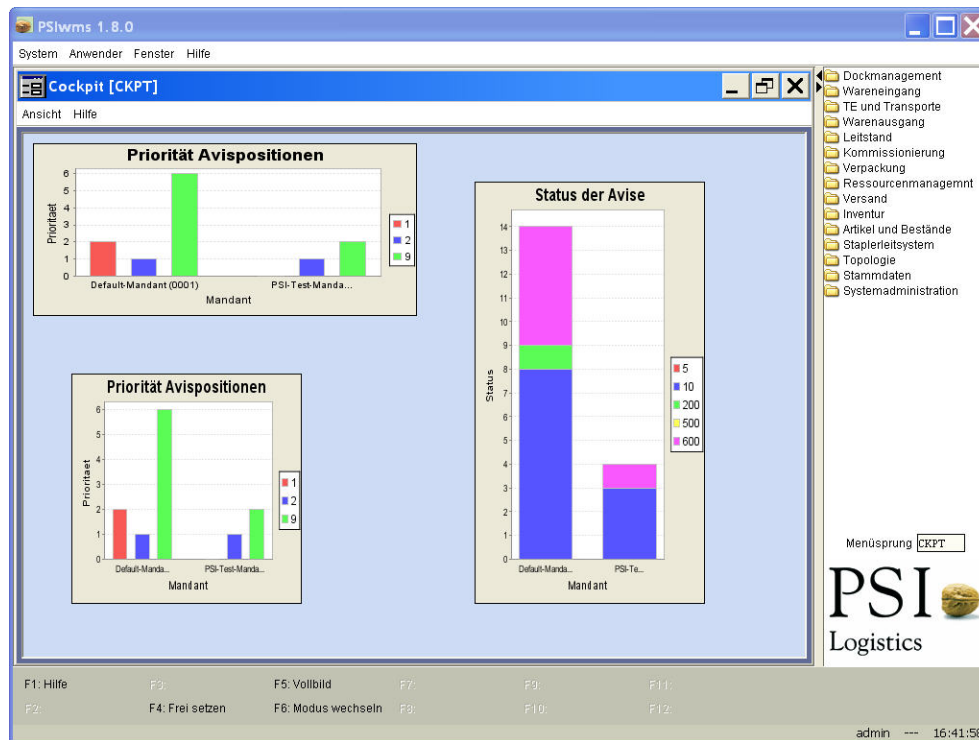


Control Centre



The copious volumes of information generated in parallel to the actual flow of material represent an almost insurmountable obstacle for many of today's logistics specialists. Deadline pressure and high demands on quality are additional challenges that have to be met. Of course, keeping track of things in this situation is no mean feat.

PSI Logistics developed the 'Control Centre' feature for the PSIwms Warehouse Management System in order to provide logistics specialists with a quick overview of current situations and processes in their logistics centres. The Control Centre is the 'nerve centre' for monitoring, controlling and optimising

logistics processes. It consists of a number of dialogue screens for displaying current situations, statuses, and cycles in warehouses, distribution centres and logistics centres. As such, discrepancies in target values, target statuses, deadlines or performance criteria can be identified quickly and delays, bottlenecks, overloading, errors or interruptions can be reacted to in good time. This is the only way logistics specialists can ensure that processes are carried out on time and with the required degree of quality.

Cockpit

The Cockpit is the central screen at the core of the Control Centre. The Cockpit consolidates and displays all key information on one screen. It allows users to consolidate information via prefabricated cockpit elements in accordance with their actual requirements. This consolidation of information provides a clear overview, for example, of critical events, orders with scheduling delays or locked subareas in the warehouse. The Cockpit has an auto-update function which ensures that data is always current. The update frequency can be individually customised for each element. All custom configuration settings in the Cockpit are saved and can be used automatically each time the Cockpit is called. This allows warehouse managers from different shifts to configure their individual control screens.

Cockpit Elements

Users can change the size of all Cockpit elements, temporarily enlarge them via the zoom function, change their position in the Cockpit and use the links to branch to other dialogue screens. There are two types of Cockpit elements. The first is the content type which determines the content aspects of the display, that is, it determines what is displayed. The second is the display type which determines the optical aspects, that is, how the content is displayed. The content type and the display type can, to a large extent, be configured independently of each other.

Cockpit elements are provided for the following objects:

- Notifications
- Orders
- Picking/Picking Services
- Picking Locations
- Reservations
- Transfer Orders
- Staging Orders
- Packing Orders
- Shipping
- Overview of Occupied Dock Doors
- Stock
- Items

The Control Centre can be displayed across one or two screens, giving users the option of displaying the Cockpit on one and additional Control Centre screens on the other. Discrepancy and warning messages can be supported by acoustic signals. The entire Control Centre, including the Cockpit, is multilingual capable.

*PSI Logistics GmbH
Dircksenstrasse 42-44
D-10178 Berlin
phone: +49 30 2801-2850
fax: +49 30 2801-2851
www.psilogistics.com
info@psilogistics.com*

PSI 
Logistics