

## Supply Chain Network Design

# Rudolph Logistics Group



The range of services of Rudolph Logistics Group extends from procurement and production logistics, warehouse management, fulfillment and distribution logistics to handling of complete outsourcing projects worldwide. This international service concept requires flexibility both in the new customer acquisition and the reaction to tenders as well as in the continuous analysis and optimization of the logistics network. To handle the tasks, the company uses PSIGlobal in conjunction with the tender management module of PSI Logistics.

### Company data

- + **Industry:** Procurement and production logistics, Warehouse management, Fulfillment and distribution logistics, Outsourcing projects
- + **Headquarter:** Gudensberg
- + **Employees:** 4,500

### Software in use

- + **Deployed software:** PSIGlobal
- + **Realized interfaces:** MySQL, XLSX, CSV



From our point of view software solutions are the foundation for order acquisition and further growth.

**Philipp Donth**

Project Coordinator System Transport





## The challenge

Rudolph Logistics Group manages 1.4 million m<sup>2</sup> of warehouse space for warehousing and value-added services (VAS) – mainly in the business areas of automotive, trade and industrial logistics and system transport. More than 4,500 employees at 40 locations in Germany, Europe, the USA and on the Arabian Peninsula ensure quick order processing. Upstream or downstream service offerings such as system transport and spare parts

supply, the networking of locations in the company's own logistics network and the preparation of offers for corresponding tenders require optimally planned transports and routes. Above all, the company has to react quickly and flexibly – whether in acquiring new customers, in tendering or in the daily analysis and optimization of the networks.

## The solution

- + Since 2016, PSIglobal has provided support in this area. With the help of the system, the service provider determines, for example, how tenders with customer-specific relations and quantity structures can be handled in its standard network, or where ideal locations should be set up, for example in the context of complex outsourcing projects. Among other things, incoming goods quantities and handling volumes as well as just-in-time and just-in-sequence requirements can be integrated and weighted against each other. The service provider uses cross-location inventory optimization to optimize storage capacities and inventories of several warehouses – depending on order data, customer restrictions and logistics costs
- + PSIglobal also enables the analysis and design of multi-level and multimodal logistics networks or the calculation and optimization of the CO<sub>2</sub> footprint according to the EU standard DIN EN 16258. For example, employees enter existing tours into the system and have them graphically displayed. This enables Rudolph Logistics to determine, among other things, the regions where the company often has to deal with empty tours. On this basis, one specifically searches for return loads or organizes triangular traffic
- + Rudolph Logistics also relies on the software for large tenders as an area freight forwarder in the automotive sector. For example, processing a quotation with up to 600,000 data records used to take up a lot of time and tie up considerable resources, for example, due to the smallest changes required, such as the quantity structure. Today, the company calculates precisely tailored offers, compares them with the network and capacities and creates offers virtually at the push of a button

## Fact sheet

### User

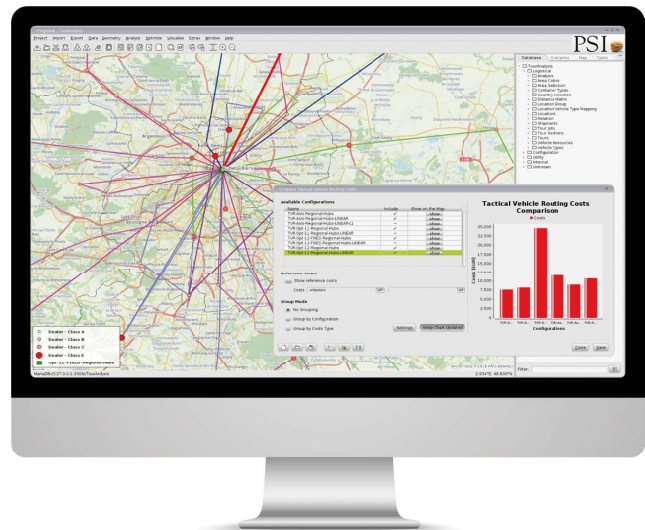
+ 1

### Language

+ German

### Solution components

- + Tender management module
- + Location optimization
- + Tactical tour planning



PSI Logistics GmbH  
 Dircksenstraße 42-44 · 10178 Berlin (Mitte) · Germany  
 Phone: +49 30 2801-2850 · info@psilogistics.com · www.psilogistics.com

© 2021

